

HEADTEACHER UPDATE

This week saw our Year 1s and Year 5s head off to the Space Centre in Leicester to enhance their science and topic knowledge. Their excited faces on the way there – and the endless facts they shared on the way back – clearly demonstrated how much they loved their hands-on learning experience, especially the astronaut journey in the planetarium.

Today we took two teams to Daventry Sports Centre to take part in a New Age Kurling competition. Both teams played fantastically, demonstrating the Monksmoor Way at all times. One team narrowly missed out on a medal – coming 4th! We will definitely be looking to purchase a Kurling set so more children can try this fun, inclusive sport.

The two nativities are starting to take shape and the carols for the KS2 Choir and Carol Concert are getting us all ready for the Christmas cheer.

Have a lovely weekend, before we step into the Christmas period of December on Monday!



Mrs Otway



THE MONKSMOOR WAY AWARDS

We are excited to continue celebrating our pupils' achievements through the Monksmoor Way Awards. These awards recognise children who demonstrate our school values – in their learning, behaviour, and interactions with others...

Reception - Eliana

Year 1 -

Year 2 - Jorah

Year 3 - Whole Class

Year 4 - Harvey

Year 5 -

Year 6 - Maya

SUPPORT FOR FAMILIES

Early Help Support for Families

At Monksmoor Park, we know that family life can have its challenges, and sometimes a little extra support can make a big difference. Northamptonshire's Early Help services offer a wide range of guidance for families, including support with routines, behaviour, wellbeing, relationships and practical challenges at home.

Their aim is to work alongside families to help things improve early, before difficulties grow. If you feel your family might benefit from some additional support, please do take a look at the information provided by Northamptonshire Children's Trust. You can access their Early Help advice, resources and referral routes through their website, and you are always welcome to speak with Mrs Otway or Mrs Bates, in school, if you'd like help getting started.

Click [HERE](#) to view further information.



UP COMING EVENTS

1st - 4th DEC - Bikeability Level 2

Selected Year 5 & 6 students. Please remember all equipment and warm/waterproof clothing.

5th DEC - Bikeability Level 1

Selected Year 3 & 4 students. Please remember all equipment and warm/waterproof clothing.

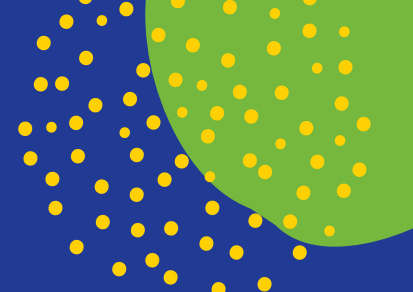
5th DEC - YEAR 4 Class Collective Worship

Year 4 parents and carers welcome to watch. Starts at 9am. School hall

5th DEC - PTA MUFTI

Chocolate item in exchange for own clothes.





ELSA at Monksmoor Park CE Primary School



♥ What is ELSA?

ELSA stands for Emotional Literacy Support Assistant. At Monksmoor Park CE Primary School, our ELSA helps children understand and manage their feelings, friendships, and wellbeing in a safe and caring space.

✿ How can ELSA help?

Our ELSA can support children with:

- Managing worries, anger, or sadness
- Building self-confidence
- Making and keeping friends
- Coping with changes or loss
- Understanding and talking about emotions

Everyone needs a little help sometimes – and that's okay!

🕒 What happens in ELSA sessions?

- Sessions are fun and relaxed
- You might talk, play games, draw, or do creative activities
- Each block of ELSA focuses on a specific personal target that has been decided by our ELSA and the child.

👤 Who is our ELSA?

Mrs Fran Griggs



Our ELSA works closely with teachers and parents to make sure every child feels supported, valued, and cared for.

Please complete an ELSA referral form if you would like to access this support.

Please note adverts are not a recommendation from the school. We advise you evaluate the service fully to ensure you are happy with the service.



Monday	Running Club KS2 History Club KS2 Multi-sports Yr1&2
Tuesday	Lego Construction (SuperStarSport) Art and Craft Club Yr1&2 Knitting Club KS2
Thursday	Choir Yr1-6 Chess Club KS2 Bead and Read Club Yr2,3&4
Friday	Gymnastics (SuperStarSport) Mrs Otway's Football Yr5&6



CONTACT US



01327 493112



enquiries@monksmoorceprimary.co.uk



www.monksmoorceprimary.co.uk



@MonksmoorCEPrimary



MESSAGES AND NEWS

ADMISSIONS CONSULTATION FOR THE RUTLAND LEARNING TRUST – Monksmoor Park CE Primary School

To view relevant documentation and find out more about the consultation, including how to comment, please visit:

[RLT ADMISSIONS CONSULTATION](#)

AAA

(click above)

Forest School Clothing

Please can you make sure children have suitable clothing for Forest School:



Layers, skins/base layers, gloves, hat, snood. They also need a spare set of clothes incl socks.

Children participate in forest school in all weathers, so please ensure they are prepared, which will enable them to enjoy their time in the sessions.

Keeping in Touch

Please make sure you download the ParentMail app if possible & ensuring you accept permissions to allow notifications. This will help ensure you are kept in the loop with emails and are also notified in a timely fashion when shop/payment items are made available to purchase.



NMPAT Music Tuition

We have a couple of spaces available for strings tuition: Violin. (Open to Year 1 upwards) Spaces are available on a first come first served basis. Please contact the office for a form should you be interested.

Lost Property

Please pop by the school office to check the lost property in the basket. Some items have been sat here since September. Any good condition items remaining at the end of term will be donated to charity.

UPCOMING EVENTS ON BEHALF OF HOLY CROSS CHURCH

* Holy Cross Church Daventry *

JOY

Daventry Christmas
Market

Saturday 22nd November

Church Open

10.00am - 3.00 pm

Come and explore the story of
advent



Refreshments
available



 THE CHURCH
OF ENGLAND

Holy Cross Church, Daventry

Christmas Fayre

At our

Open House Cafe

Friday 28th November

10.00- 12.00

In the Church
hall



Church Walk NN11 4BL

Holy Cross Church Daventry

Christingle Service

Join us on
Sunday 30th November
at 3.30pm
in the Church Hall
to make a
Christingle
for a special

CHILDREN'S CHRISTINGLE
SERVICE

IN THE CHURCH AT 4.00PM.

Come and help support the work of
The Children's Society.
Every one welcome!

Holy Cross Church, Daventry

For unto us
a child is born!



Crib Service

24th December 2025

4pm

Come and hear the Christmas Story as it unfolds and watch
as our little helpers create the Nativity Scene at the Altar.

A perfect start to the excitement of Christmas Eve and a timely reminder of what
Christmas is all about.

All children are invited to dress up as characters in the Nativity and to take part in the
story.