

HEADTEACHER UPDATE

I hope you have all had a chance to read and enjoy our latest SIAMS report. It is such a positive celebration of how our school vision is lived out every day—from our very first days to where we are now. I could not be prouder of our pupils, staff, families, and the whole Monksmoor community. We truly are a nurturing and aspirational school, and this shines through in everything we do.

This week, I had the privilege of joining Year 4 on their visit to the Christmas Interactive event at Daventry Methodist Church. The children listened beautifully as actors brought each part of the Nativity story to life. Even walking in the rain, they were full of joy, singing their times tables along the way! They really demonstrated the Monksmoor Way, and it was lovely to see.

As we begin our Advent journey in school, we are reflecting on how Christians across the world celebrate the Christmas story—sometimes in quite different ways. It has already prompted thoughtful conversations and a lovely sense of anticipation.

I wish you all a peaceful and joyful weekend.

Mrs Otway

THE MONKSMOOR WAY AWARDS

We are excited to continue celebrating our pupils' achievements through the Monksmoor Way Awards. These awards recognise children who demonstrate our school values — in their learning, behaviour, and interactions with others...

Reception - Elisei

Year 1 - Gio

Year 2 - Niamh

Year 3 - Elliott

Year 4 -

Year 5 Bobby &
Amelia

Year 6 - Frankie

SUPPORT FOR FAMILIES

Early Help Support for Families

At Monksmoor Park, we know that family life can have its challenges, and sometimes a little extra support can make a big difference. Northamptonshire's Early Help services offer a wide range of guidance for families, including support with routines, behaviour, wellbeing, relationships and practical challenges at home.

Their aim is to work alongside families to help things improve early, before difficulties grow. If you feel your family might benefit from some additional support, please do take a look at the information provided by Northamptonshire Children's Trust. You can access their Early Help advice, resources and referral routes through their website, and you are always welcome to speak with Mrs Otway or Mrs Bates, in school, if you'd like help getting started.

Click [HERE](#) to view further information.



UP COMING EVENTS

9th & 10th Dec - EYFS Nativity @ 2pm

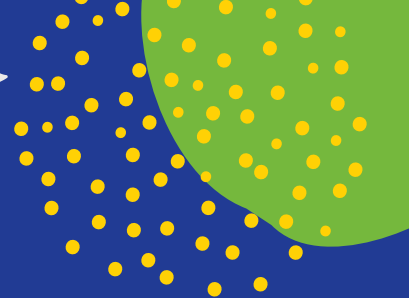
10th Dec - Whole School Carol Service @6pm

11th Dec - Christmas Jumper Day & Christmas Lunch

12th Dec - Children's Christmas Games

12th Dec - Christmas Fayre @ 5-7pm





Please note adverts are not a recommendation from the school. We advise you evaluate the service fully to ensure you are happy with the service.

Spring Term



Monday	Running Club (KS2) 30 spaces
Tuesday	Knitting Club (KS2) 15 spaces History Club (KS2) 12 spaces Craft Club (Yr1-2) 10 spaces
Thursday	Choir (YrR-6) 30 spaces Chess Club (KS2) 20 spaces Read then Bead Club (Yr2-4) 15 spaces
Friday	SuperStar Sport Club- Football

Please note all staff-led clubs finish promptly at 16:15pm and run from/to:
Week commencing: 12.01.2026
Week ending: 20.03.2026



CONTACT US



01327 493112



enquiries@monksmoorceprimary.co.uk



www.monksmoorceprimary.co.uk



@MonksmoorCEPrimary



MESSAGES AND NEWS

ADMISSIONS CONSULTATION FOR THE RUTLAND LEARNING TRUST – Monksmoor Park CE Primary School

To view relevant documentation and find out more about the consultation, including how to comment, please visit:

RLT ADMISSIONS CONSULTATION

AAA

(click above)

NMPAT Music Tuition

We have a couple of spaces available for strings tuition: Violin. (Open to Year 1 upwards)
Spaces are available on a first come first served basis. Please contact the office for a form should you be interested.

School Run Parking

A polite reminder to park safely, legally and respectfully around the school and in the surrounding residential areas. This helps us to ensure all of our children are able to get to school in a safe manner.

Teacher-led Clubs

Please see to the left for the clubs we will be offering this Spring Term. We are excited to welcome some fresh faces to our clubs. Clubs will be bookable on ParentMail as usual and we will send out in email in due course to let you know the date and time for their release.

We kindly ask that you sign your child up to **x1 club only** to allow other children access to the opportunities too. Excess sign ups may be removed to allow equitable access to all children.

Christmas Cards

Last Post: 12th December 2025 @ 3:30pm